

Photoshop - It's all about Finesse

Advanced Level Workshop



Some Things to Know

There may be some techniques that we normally use that aren't part of this lesson. We might sharpen differently than you do... If you see something that isn't part of the learning objective and have questions grab us afterwards or send us an email and we can send our point you to more info.

In the interest of time I will be jumping around and will not likely complete any images. A serious retouching session can last from 30 minutes to 5 hours and the return on investment starts going down during a class if I spend too long on the same task.

Inspiration



stop beating yourself up

how to feel miserable as an artist

1. Constantly COMPARE yourself to other artists
2. Talk to your family about WHAT YOU DO & EXPECT them to cheer you on
3. Base the success of your ENTIRE career on ONE project
4. Stick with WHAT YOU KNOW
5. UNDERVALUE your EXPERTISE
6. Let MONEY dictate WHAT YOU DO
7. BOW to social PRESSURES
8. ONLY do WORK that your FAMILY would LOVE
9. Do WHATEVER the CLIENT | CUSTOMER | GALLERY OWNER | PATRON INVENTOR asks
10. Set UNACHIEVABLE | OVERWHELMING goals, to be ACCOMPLISHED by TOMORROW

Inspiration



Subtlety



fi-nesse (f -n s)

n.

1. Refinement and delicacy of performance, execution, or artisanship.
2. Skillful, subtle handling of a situation; tactful, diplomatic maneuvering.

Learning Objectives for this Workshop

Selections

- Basic Tools
- Pen Tool
- Sacrificial Layers

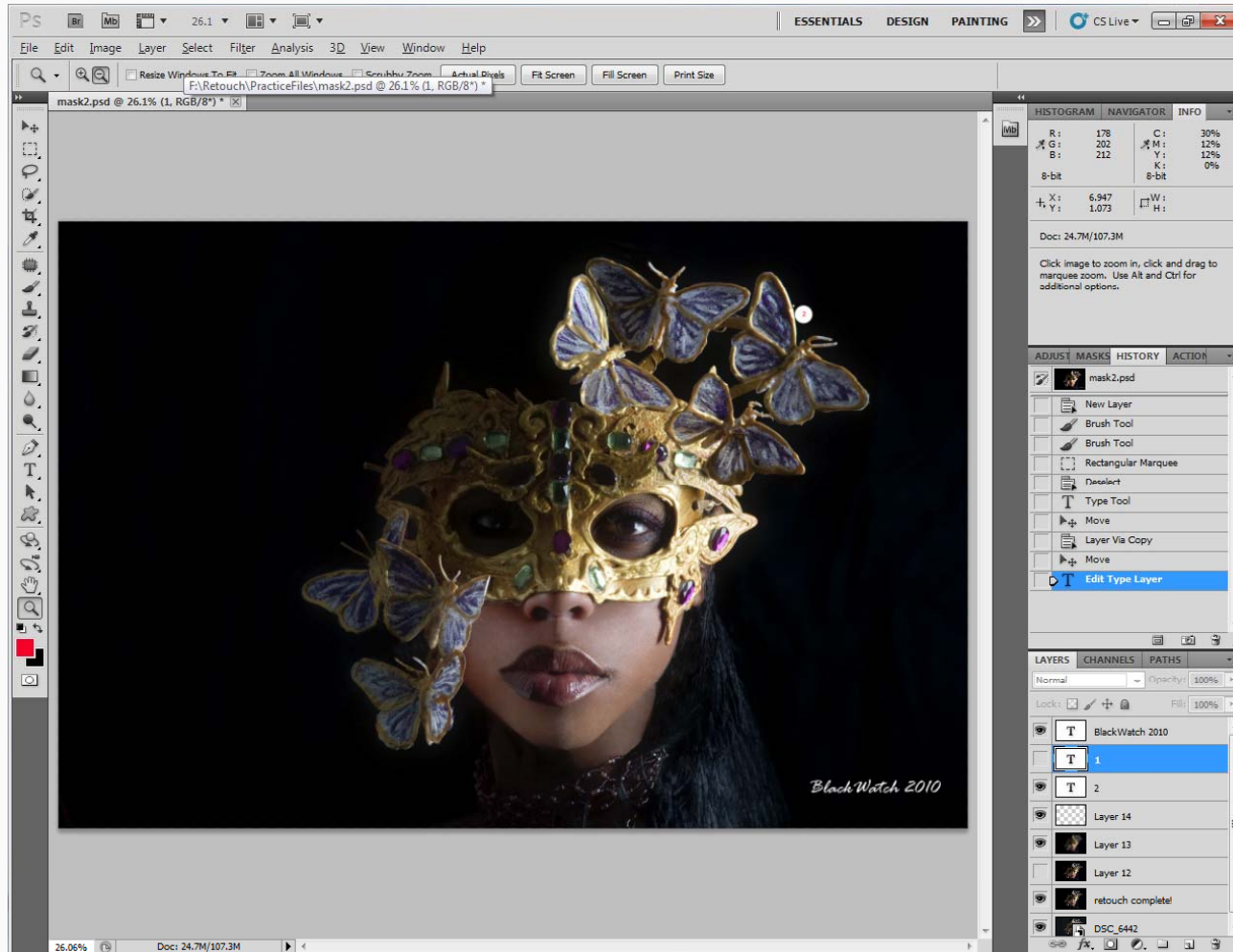
Advanced Blending

- Layer and tool opacity
 - Layer Masks – In Depth
 - Fade
 - Blending Modes
 - Blending Different RAW Variations
-
- Intro to Channels?



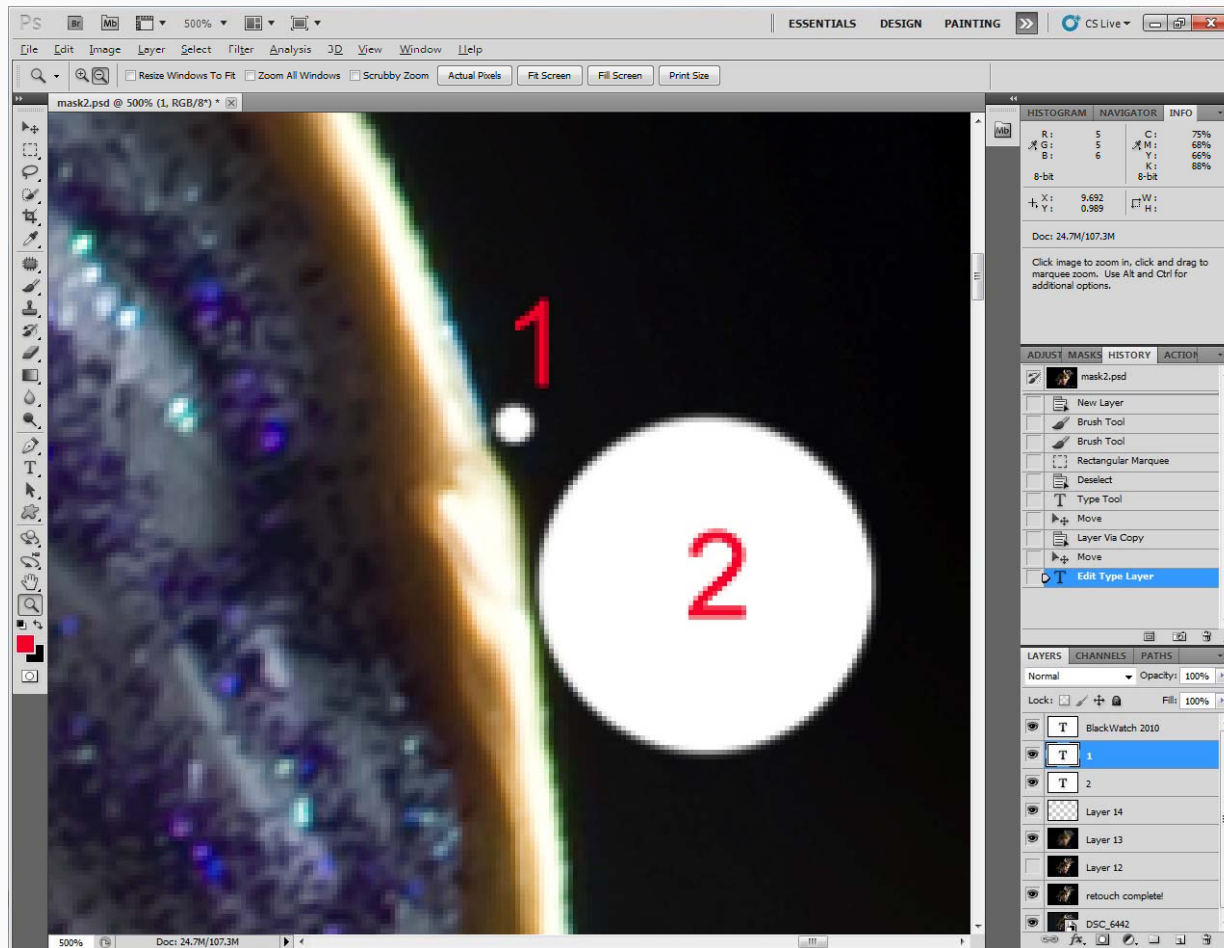
Basics

When editing an image ZOOM in close enough that you can work on it with precision.



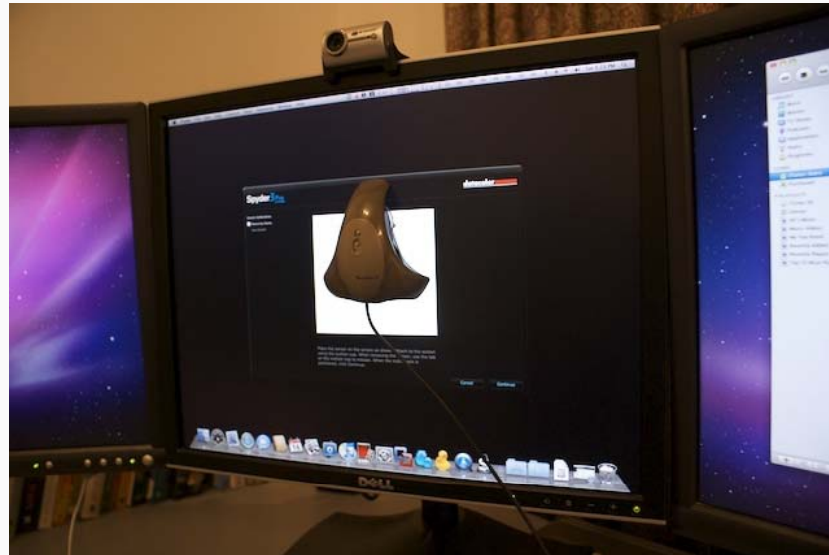
Basics

When editing an image ZOOM in close enough that you can work on it with precision.



Basics

P.S. If you want to get professional results in Photoshop you **NEED** a pen tablet and also some type of color calibration device.



Brush Types

Soft- Good for slight blending effect but has some definition at edge. Doesn't create a hard line.

Hard - When a very defined edge is necessary

Air Brush - Softest...has no edge...but has overspray.

Specialty Brushes – Create your own or check out [Deviant Art.com](http://DeviantArt.com)

Opacity

Opacity -Controls how “see through” or opaque the paint or layer is.

100% - not see through

0% - invisible

Brush opacity is additive. The more you paint in the same spot the more opaque it gets.

Basic Blends

Create a new layer for your alterations and adjust the Opacity to blend with the existing.

Use **Edit/Fade** to reduce the effect of the last thing you did.

Selection Tools

Selections can be used in a manner similar to using masking tape when you are painting something.

The **Rectangular Marquee Tool** in conjunction with **Select/Transform Selection** can be used as a handy/dandy straight edge.

ALT - to subtract from your selection

SHIFT - to add to your selection

CTRL – Cuts away the image from the selected area and allows you to move it elsewhere

CTRL/ALT – Copies the image from the selected area and allows you to paste it elsewhere. *This can be useful for fixing missing areas of the background or even copying a similar base, to a troubled area, for healing tools to work more effectively.*

Selection Tools

The **Rectangular Marquee Tool** in conjunction with **Select/Transform Selection** can be used as a handy/dandy straight edge.

The **Quick Select Tool** is terrific at finding edges

- Make the brush smaller and it will be more accurate but cover less area at a time.

The **Quick Mask Mode (Q)** allows you to use paint tools for creating a selection.

Selection Tools

The **Pen Tool** can also be used to make difficult selections. A simple way to use it for beginners is to:

- Zoom in close
- Click once to add each point
- If your point is not exactly where you want it press the **CTRL** key before adding another point and you can reposition the last point.
- Once you close your path you can right click inside of it and choose “Make Selection”

Sacrificial Layers

Sometimes the selection tools just can't perform well based on the contrast of the image.

To help the automatic tools you can create a sacrificial layer. This is a new composite layer (Shortcut - Hold down **CTRL /ALT/SHIFT** then hit **N** and then **E**).

You can then do nasty contrast adjustments (lightness or hue) to the layer making it easier for the selection tools to function. Once your selection is made and saved you can delete the layer.

Saving Selections

The traditional Select/Save Selection in the toolbar

Create a new blank layer and click on the **Add Layer Mask** Icon. You can either use it as a mask or you can always right click on the mask and choose “Add to Selection”

Blending Strategies

Layer Opacity – Blends the entire layers visible contents with the visible layers below it.

Black Areas of Mask – Conceals portions of the layer it is associated with

White Areas of Mask – Reveals portions of the layer it is associated with

Gray Areas of Mask – Partially conceals portions of the layer it is associated with

Black Conceals - White Reveals

Shadow Conceals - Light Reveals

Advanced Masking

Gray Areas of Mask – Partially conceals portions of the layer it is associated with.

Gradient Tool– The gradient tool can be used on a layer mask to create seamless transitions

Mask Alterations

- Levels or Curves can be used to adjust how black, white, or gray the mask is.
- Blurring the mask with Gaussian blur can help to blend it.

Masking Shortcuts

Painting:

B for brush

D to default the foreground and background paint colors to Black and White

X to exchange foreground and background colors (switch from black to white and vice versa)

Masking Shortcuts

**** (back slash) key shows where mask is already at on image.

ALT key when creating a layer mask will create a mask that is filled with black rather than white.

CTRL I inverts the mask when it is selected.

*Holding the **ALT** key while dragging a mask from one layer to another creates a copy of the mask.*

Clicking on the “**New Layer Mask**” icon while you have a selection made will create a mask from the selection.



Advanced Masking

Selections and Masks
Using Masks instead of Selections

Advanced Masking

Channels

Any black and white layer can be used as a mask if you incorporate channels.

Thank you!

http://www.blackwatchart.com/cps_raw



© Black Watch
Dale & Jen Simmons 2009